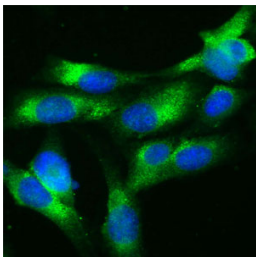


Rabbit antibody to RAB7 (160-205)

Code	OSR00306W
ID Tag	Rb668-060908-WS
Unit size	100 ul
Immunogen	A synthetic peptide from aa region 160-205 of human RAB7 conjugated to blue carrier protein has been used as the antigen. The peptide is homologous in mouse and xenopus.
Conjugate	Unconjugated antibody
Also known	RAB7A, RAB7
Host	NZ white rabbit
Purity	Whole serum
Clonality	Polyclonal
Isotype	Polyclonal, whole serum
Applications	IHC. Use at a dilution of 1:300 to 1: 2000. The optimal dilution should be determined by the end user. Not yet tested in other applications.
Specificity	Specific for RAB7.
Spcs X-react.	Human, mouse. Other species not yet tested.
Format	Lyophilised
Reconstitution	Reconstitute in 100 ul of sterile water. Centrifuge to remove any insoluble material.
Storage	Maintain the lyophilised/reconstituted antibodies frozen at -20C for long term storage and refrigerated at 2-8C for a shorter term. When reconstituting, glycerol (1:1) may be added for an additional stability. Avoid freeze and thaw cycles.
Expiry Date	12 months after reconstitution
Shipping	This item will be shipped to you at ambient temperature in a lyophilised form.
Limitation	For research use only



Human Melanoma cell line C 32 was cultured overnight on round cover slides placed in a 24 well tissue culture plate. Culture media removed and washed twice with PBS before fixing with 2% formalin for 10 minutes. Cells were then washed three times with PBS and incubated with Tris 0.01M containing Triton X 0.005% for 15 minutes. Cells were washed and incubated with 100 µl of Rabbit antibody to internal region of Ras-related protein Rab-7a (RAB7A, RAB7): whole serum (OSR00306W) diluted 1:100 in the blocking buffer for 30 minutes. Wells were then washed 7 times with PBS and incubated with 100 µl of anti Rb-FITC conjugate diluted 1:100 in the blocking buffer for further 30 minutes. Cells were washed as before and nuclear counter stained with Hoechst and mounted on to slides.