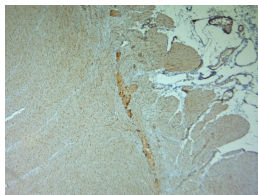


Rabbit antibody to TRPV2

Code	OST00182W
ID Tag	Rb0136-281007-WS
Unit size	100 μ l
Immunogen	A synthetic peptide from human TRPV2 conjugated to blue carrier protein was used as the antigen.
Conjugate	Unconjugated antibody
Also known	Transient receptor potential cation channel subfamily V member 2, TrpV2, osm-9-like TRP channel 2, OTRPC2, vanilloid receptor-like protein, VRL, VRL1, VRL-1, OTRPC2, MGC12549
Host	NZ white rabbit
Purity	Whole serum
Clonality	Polyclonal
Isotype	Polyclonal, whole serum
Applications	IHC, WB. A dilution of 1 : 300 to 1 : 2000 is recommended. The optimal dilution should be determined by the end user. Not yet tested in other applications.
Specificity	Specific for TRPV2.
Spcs X-react.	Human. Other species not yet tested.
Format	Lyophilised
Reconstitution	Reconstitute in 100 μ l of sterile water. Centrifuge to remove any insoluble material.
Storage	Maintain the lyophilised/reconstituted antibodies frozen at -20 $^{\circ}$ C for long term storage and refrigerated at 2-8 $^{\circ}$ C for a shorter term. When reconstituting, glycerol (1:1) may be added for an additional stability. Avoid freeze and thaw cycles.
Expiry Date	12 months after reconstitution
Shipping	This item will be shipped to you at ambient temperature in a lyophilised form.
Limitation	For research use only



IHC on paraffin sections of human large intestine tissue using Rabbit antibody to TRPV2 (550-600): OST00182W. HIER: 1 mM EDTA, pH 8 for 20 min using Thermo PT Module. Blocking: 0.2% LFDM in TBST filtered thru 0.2 μ m. Detection was done using Novolink HRP polymer from Leica following manufacturer's instructions. Primary antibody: dilution 1:1000, incubated 30 min at RT (using Autostainer). Sections were counterstained with Harris Hematoxylin.