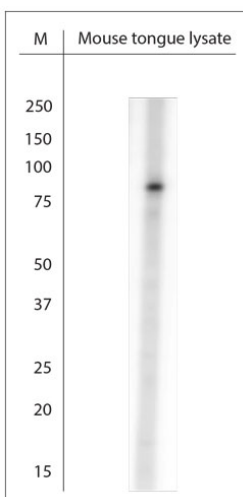


Rabbit antibody to TAS1R3

Code	OSM00056W
ID Tag	Rb572-100808-WS
Unit size	100 ul
Immunogen	A synthetic peptide from mouse TAS1R3 conjugated to blue carrier protein was used as the antigen.
Conjugate	Unconjugated antibody
Also known	Taste receptor type 1 member 3 (precursor), sweet taste receptor T1R3, saccharin preference protein, Sac, T1r3, Tr3, Tas1r3, TS1R3
Host	NZ white rabbit
Purity	Whole serum
Clonality	Polyclonal
Isotype	Polyclonal, whole serum
Applications	IHC, WB. A dilution of 1 : 1000 to 1:2000 is recommended. The optimal dilution should be determined by the end user. Not yet tested in other applications.
Specificity	Specific for TAS1R3.
Spcs X-react.	Mouse, rat. Other species not yet tested.
Format	Lyophilised
Reconstitution	Reconstitute in 100 ul of sterile water. Centrifuge to remove any insoluble material.
Storage	Maintain the lyophilised/reconstituted antibodies frozen at -20C for long term storage and refrigerated at 2-8C for a shorter term. When reconstituting, glycerol (1:1) may be added for an additional stability. Avoid freeze and thaw cycles.
Expiry Date	12 months after reconstitution
Shipping	This item will be shipped to you at ambient temperature in a lyophilised form.
Limitation	For research use only



WB on mouse tongue lysate. Lysate was prepared in RIPA using RP4 from OMNI. Blocking: 1xPBS containing 0.5% LFDm for 30 min at RT with shake at 70 RPM. Primary antibody dilution: 1:1000 incubated overnight at 4C. Detection: C-Digit from LiCore at high resolution.