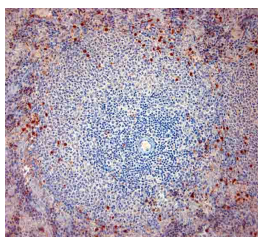


Rabbit antibody to mouse Cathelicidin

| | |
|-----------------------|---|
| Code | OSC00043W |
| ID Tag | Rb4056-21052022-WS |
| Unit size | 100 ul |
| Immunogen | A synthetic peptide from mouse Cathelicidin conjugated to blue carrier protein has been used as the antigen. |
| Conjugate | Unconjugated antibody |
| Also known | A synthetic peptide from mouse Cathelin related antimicrobial peptide (Cathelicidin, CAMP, CRAMP) conjugated to an immunogenic carrier protein has been used as the antigen. |
| Host | NZ white rabbit |
| Purity | Whole serum |
| Clonality | Polyclonal |
| Isotype | Polyclonal, whole serum |
| Applications | IHC, WB. Use at a dilution of 1:100 to 1: 2000. The optimal dilution should be determined by the end user. Not yet tested in other applications. |
| Specificity | Specific for Cathelin related antimicrobial peptide. |
| Spcs X-react. | Mouse. Other species not yet tested. |
| Format | Lyophilised |
| Reconstitution | Reconstitute in 100 ul of sterile water. Centrifuge to remove any insoluble material. |
| Storage | Maintain the lyophilised/reconstituted antibodies frozen at -20C for long term storage and refrigerated at 2-8C for a shorter term. When reconstituting, glycerol (1:1) may be added for an additional stability. Avoid freeze and thaw cycles. |
| Expiry Date | 12 months after reconstitution |
| Shipping | This item will be shipped to you at ambient temperature in a lyophilised form. |
| Limitation | For research use only |



IHC-P on paraffin sections of mouse spleen.
 The animal was perfused using Autoperfuser at a pressure of 130 mmHg with 300 ml 4% FA before being processed for paraffin embedding. HIER: Tris-EDTA, pH 9 for 20 min using Thermo PT Module.
 Blocking: 0.2% LFDM in TBST filtered thru 0.2 µm.
 Detection was done using Novolink HRP polymer from Leica following manufacturers instructions; DAB chromogen: Candela DAB chromogen from Osenses.
 Primary antibody: dilution 1: 1000, incubated 30 min at RT using Autostainer.
 Sections were counterstained with Harris Hematoxylin.

Related Products

OSC00140G Rabbit antibody to mouse Cathelicidin