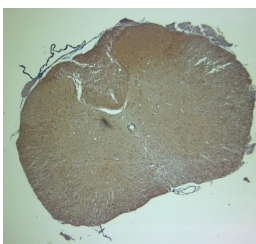


## Rabbit antibody to HOMER2

<b>Code</b>	OSH00003W
<b>ID Tag</b>	Rb1632-211110-WS
<b>Unit size</b>	100 µl
<b>Immunogen</b>	A synthetic peptide from the internal region of human HOMER2 conjugated to an immunogenic carrier protein was used as the antigen. The peptide is homologous with the corresponding sequence in mouse, rat, bovine.
<b>Conjugate</b>	Unconjugated antibody
<b>Also known</b>	Home2, Homer protein homolog 2, Cupidin
<b>Host</b>	NZ white rabbit
<b>Purity</b>	Whole serum
<b>Clonality</b>	Polyclonal
<b>Isotype</b>	Polyclonal, whole serum
<b>Applications</b>	IHC, WB (confirmed by recombinant protein). A dilution of 1 : 300 to 1 : 2000 is recommended. The optimal dilution should be determined by the end user. Not yet tested in other applications.
<b>Specificity</b>	Specific for Homer2.
<b>Spcs X-react.</b>	Mouse, rat, human. Other species not yet tested.
<b>Format</b>	Lyophilised
<b>Reconstitution</b>	Reconstitute in 100 µl of sterile water. Centrifuge to remove any insoluble material.
<b>Storage</b>	Maintain the lyophilised/reconstituted antibodies frozen at -20°C for long term storage and refrigerated at 2-8°C for a shorter term. When reconstituting, glycerol (1:1) may be added for an additional stability. Avoid freeze and thaw cycles.
<b>Expiry Date</b>	12 months after reconstitution
<b>Shipping</b>	This item will be shipped to you at ambient temperature in a lyophilised form.
<b>Limitation</b>	For research use only



```

/* Font Definitions */
@font-face
{font-family:Arial;
panose-1:2 11 6 4 2 2 2 2 4;
mso-font-charset:0;
mso-generic-font-family:auto;
mso-font-pitch:variable;
mso-font-signature:3 0 0 0 1 0;}
@font-face
{font-family:Cambria;
panose-1:2 4 5 3 5 4 6 3 2 4;
mso-font-charset:0;
mso-generic-font-family:auto;
mso-font-pitch:variable;
mso-font-signature:3 0 0 0 1 0;}
/* Style Definitions */
p.MsoNormal, li.MsoNormal, div.MsoNormal
{mso-style-parent:"";
margin-top:0cm;
margin-right:0cm;
margin-bottom:10.0pt;

```

## Rabbit antibody to HOMER2

```
margin-left:0cm;  
mso-pagination:widow-orphan;  
font-size:12.0pt;  
font-family:"Times New Roman";  
mso-ascii-font-family:Arial;  
mso-fareast-font-family:Cambria;  
mso-fareast-theme-font:minor-latin;  
mso-hansi-font-family:Arial;  
mso-bidi-font-family:"Times New Roman";  
mso-bidi-theme-font:minor-bidi;}  
@page Section1  
{size:612.0pt 792.0pt;  
margin:72.0pt 90.0pt 72.0pt 90.0pt;  
mso-header-margin:36.0pt;  
mso-footer-margin:36.0pt;  
mso-paper-source:0;}  
div.Section1  
{page:Section1;}  
-->
```

IHC on paraffin sections of rat spinal cord tissue using Rabbit antibody to HOMER2: OSH00003W.

HIER: 1 mM EDTA, pH 8 for 20 min using Thermo PT Module.

Blocking: 0.2% LFD in TBST filtered thru 0.2  $\mu$ m.

Detection was done using Novolink HRP polymer from Leica following manufacturer's instructions.

Primary antibody: dilution 1: 1000, incubated 30 min at RT (using Autostainer).

Sections were counterstained with Harris Hematoxylin.