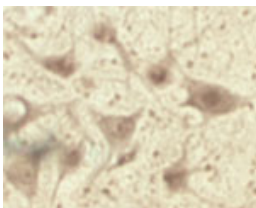


Rabbit antibody to TPPC1

Code	OST00160W
ID Tag	Rb461-150608-WS
Unit size	100 µl
Immunogen	A synthetic peptide from human TPPC1 conjugated to an immunogenic carrier protein was used as the antigen. The peptide is homologous with the corresponding sequence in mouse, rat and chicken.
Conjugate	Unconjugated antibody
Also known	Multiple myeloma protein 2, MUM-2, TRAPPC1, BET5, MUM2
Host	NZ white rabbit
Purity	Whole serum
Clonality	Polyclonal
Isotype	Polyclonal, whole serum
Applications	IHC, WB. A dilution of 1 : 300 to 1 : 2000 is recommended. The optimal dilution should be determined by the end user.
Specificity	Specific for TPPC1.
Spcs X-react.	Human, mouse, rat. Other species not yet tested.
Format	Lyophilised
Reconstitution	Reconstitute in 100 µl of sterile water. Centrifuge to remove any insoluble material.
Storage	Maintain the lyophilised/reconstituted antibodies frozen at -20°C for long term storage and refrigerated at 2-8°C for a shorter term. When reconstituting, glycerol (1:1) may be added for an additional stability. Avoid freeze and thaw cycles.
Expiry Date	12 months after reconstitution
Shipping	This item will be shipped to you at ambient temperature in a lyophilised form.
Limitation	For research use only



IHC on rat spinal cord using Rabbit antibody to TPPC1 (OST00160W) at 1 : 2000 dilution. Pre-absorption of the antibody with the immunising peptide completely abolishes the immunostaining (not shown).

Related Products

OST00161G Rabbit antibody to TPPC1