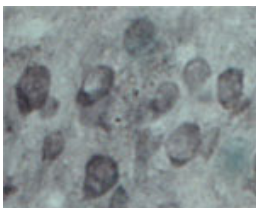


Rabbit antibody to EXOC5 (350-400)

Code	OSE00006W
ID Tag	Rb460-150608-WS
Unit size	100 µl
Immunogen	A synthetic peptide from aa region 350-400 of human EXOC5 conjugated to blue carrier protein was used as the antigen. The peptide is homologous with the corresponding sequence in mouse and rat.
Conjugate	Unconjugated antibody
Also known	Exocyst complex component Sec10, EXOC5, SEC10, SEC10L1
Host	NZ white rabbit
Purity	Whole serum
Clonality	Polyclonal
Isotype	Polyclonal, whole serum
Applications	IHC, WB. A dilution of 1 : 300 to 1 : 2000 is recommended. The optimal dilution should be determined by the end user. Not yet tested in other applications.
Specificity	Specific for SEC10.
Spcs X-react.	Mouse, rat, human. Other species not yet tested.
Format	Lyophilised
Reconstitution	Reconstitute in 100 µl of sterile water. Centrifuge to remove any insoluble material.
Storage	Maintain the lyophilised/reconstituted antibodies frozen at -20°C for long term storage and refrigerated at 2-8°C for a shorter term. When reconstituting, glycerol (1:1) may be added for an additional stability. Avoid freeze and thaw cycles.
Expiry Date	12 months after reconstitution
Shipping	This item will be shipped to you at ambient temperature in a lyophilised form.
Limitation	For research use only



IHC on rat brain using Rabbit antibody to EXOC5 (350-400) (OSE00006W) at 1 : 2000 dilution. Pre-absorption of the antibody with the immunising peptide completely abolishes the immunostaining (not shown).

Related Products

OSE00007G Rabbit antibody to EXOC5 (350-400)