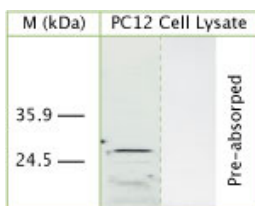


Rabbit antibody to DRAM

Code	OSA00052W
ID Tag	Rb445-150608-WS
Unit size	150 µl
Immunogen	A synthetic peptide from the n-terminal of mouse DRAM (Damage-regulated autophagy modulator) conjugated to an immunogenic carrier protein has been used as the antigen. The peptide is homologous in rat and shares 86% identity with human's.
Conjugate	Unconjugated antibody
Also known	Damage-regulated autophagy modulator
Host	NZ white rabbit
Purity	Whole serum
Clonality	Polyclonal
Isotype	Polyclonal, whole serum
Applications	IHC, WB. Use at a dilution of 1 : 200 to 1 : 2000. The optimal dilution should be determined by the end user. Not yet tested in other applications.
Specificity	Specific for DRAM.
Spcs X-react.	Mouse, rat. Other species not yet tested.
Format	Lyophilised
Reconstitution	Reconstitute in 150 µl of sterile water. Centrifuge to remove any insoluble material.
Storage	Maintain the lyophilised/reconstituted antibodies frozen at -20°C for long term storage and refrigerated at 2-8°C for a shorter term. When reconstituting, glycerol (1:1) may be added for an additional stability. Avoid freeze and thaw cycles.
Expiry Date	12 months after reconstitution
Shipping	This item will be shipped to you at ambient temperature in a lyophilised form.
Limitation	For research use only



WB on PC12 cell lysate using Rabbit antibody to DRAM (OSA00052W) at 1 : 300 dilution. Pre-absorption of the antibody with the immunising peptide completely abolishes the detected band.

Related Products

OSD00012G Rabbit antibody to DRAM