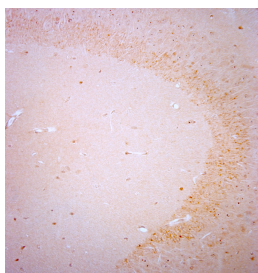


Rabbit antibody to BDNF

Code	OSB00017W
ID Tag	Rb2851-090916-WS
Unit size	100 ul
Immunogen	A synthetic peptide from n-terminal region of human mature BDNF conjugated to blue carrier protein was used as the antigen. The peptide is homologous in many other species including rat, mouse, zebra fish and xenopus.
Conjugate	Unconjugated antibody
Also known	Brain-derived neurotrophic factor, BDNF, Abrineurin
Host	NZ white rabbit
Purity	Whole serum
Clonality	Polyclonal
Isotype	Polyclonal, whole serum
Applications	IHC, WB. A dilution of 1 : 1000 is recommended. The optimal dilution should be determined by the end user. Not yet tested in other applications.
Specificity	Specific for mature BDNF.
Spcs X-react.	Human, rat, mouse. Other species not yet tested.
Format	Lyophilised.
Reconstitution	Reconstitute in 100 ul of sterile water. Centrifuge to remove any insoluble material.
Storage	Maintain the lyophilised/reconstituted antibodies frozen at -20C for long term storage and refrigerated at 2-8C for a shorter term. When reconstituting, glycerol (1:1) may be added for an additional stability. Avoid freeze and thaw cycles.
Expiry Date	12 months after reconstitution
Shipping	This item will be shipped to you at ambient temperature in a lyophilised form.
Limitation	For research use only



IHC-P on paraffin sections of mouse hippocampus.
 The animal was perfused using Autoperfuser at a pressure of 130 mmHg with 300 ml 4% FA before being processed for paraffin embedding. HIER: Tris-EDTA, pH 9 for 20 min using Thermo PT Module.
 Blocking: 0.2% LFD in TBST filtered thru 0.2 µm.
 Detection was done using Novolink HRP polymer from Leica following manufacturers instructions; DAB chromogen: Candela DAB chromogen from Osenses.
 Primary antibody: dilution 1: 1000, incubated 30 min at RT using Autostainer.
 Sections were counterstained with Harris Hematoxylin.

Related Products

OSB00018G Rabbit antibody to BDNF