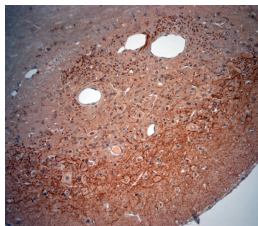


Rabbit antibody to VPS45A

Code	OSV00016W
ID Tag	Rb451-150608-WS
Unit size	100 µl
Immunogen	A synthetic peptide from rat VPS45A conjugated to blue carrier protein was used as the antigen. The peptide is homologous in mouse.
Conjugate	Unconjugated antibody
Also known	VPS45, rvps45, Vps45a
Host	NZ white rabbit
Purity	Whole serum
Clonality	Polyclonal
Isotype	Polyclonal, whole serum
Applications	IHC, WB. A dilution of 1 : 1000 is recommended for IHC-P and to 1 : 3000 for WB. The optimal dilution should be determined by the end user.
Specificity	Specific for VPS45.
Spcs X-react.	Mouse, rat. Other species not yet tested.
Format	Lyophilised
Reconstitution	Reconstitute in 100 µl of sterile water. Centrifuge to remove any insoluble material.
Storage	Maintain the lyophilised/reconstituted antibodies frozen at -20°C for long term storage and refrigerated at 2-8°C for a shorter term. When reconstituting, glycerol (1:1) may be added for an additional stability. Avoid freeze and thaw cycles.
Expiry Date	12 months after reconstitution
Shipping	This item will be shipped to you at ambient temperature in a lyophilised form.
Limitation	For research use only



IHC-P on paraffin sections of rat brain.

The animal was perfused using Autoperfuser at a pressure of 130 mmHg with 300 ml 4% FA before being processed for paraffin embedding. HIER: Tris-EDTA, pH 9 for 20 min using Thermo PT Module.

Blocking: 0.2% LFDM in TBST filtered thru 0.2 µm.

Detection was done using Novolink HRP polymer from Leica following manufacturers instructions; DAB chromogen: Candela DAB chromogen from Osenses.

Primary antibody: dilution 1: 1000, incubated 30 min at RT using Autostainer.

Sections were counterstained with Harris Hematoxylin

Related Products

OSV00017G Rabbit antibody to VPS45A