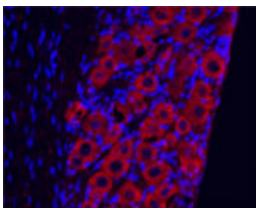


Sheep antibody to TrkC

Code	OST00119W
ID Tag	Gt263-160111-WS
Unit size	100 ul
Immunogen	A synthetic peptide from the extracellular domain of rat TrkC conjugated to lue carrier protein was used as the antigen. The peptide is homologous in mouse and human.
Conjugate	Unconjugated antibody
Also known	Neurotrophic tyrosine kinase receptor type 3, TrkC tyrosine kinase, GP145-TrkC, Trk-C, NT-3 growth factor receptor, NTRK3
Host	Sheep
Purity	Whole serum
Clonality	Polyclonal
Isotype	Polyclonal, whole serum
Applications	IHC, WB (confirmed by recombinant protein). A dilution of 1 : 300 to 1 : 2000 is recommended. The optimal dilution should be determined by the end user. Not yet tested in other applications.
Specificity	Specific for TrkC.
Spcs X-react.	Rat, mouse, human. Other species not yet tested.
Format	Lyophilised
Reconstitution	Reconstitute in 100 ul of sterile water. Centrifuge to remove any insoluble material.
Storage	Maintain the lyophilised/reconstituted antibodies frozen at -20C for long term storage and refrigerated at 2-8C for a shorter term. When reconstituting, glycerol (1:1) may be added for an additional stability. Avoid freeze and thaw cycles.
Expiry Date	12 months after reconstitution
Shipping	This item will be shipped to you at ambient temperature in a lyophilised form.
Limitation	For research use only



IF on rat trigeminal ganglia at 1 : 500 dilution using Sheep antibody to extracellular domain of TrkC (OST00119W), DAPI counterstained.

Related Products

OST00120G	Sheep antibody to TrkC
OST00179W	Rabbit antibody to TrkC